

$$W = aL^b$$

$$a = 0.0219$$

$$b = 2.94$$

SL (cm)	W (gr)	SL (in)	W (lb)	Ag (yr)
25.4	296	10	0.7	1
27.9	391	11	0.9	
30.5	505	12	1.1	
33.0	639	13	1.4	
35.6	795	14	1.8	2
38.1	974	15	2.1	
40.6	1177	16	2.6	
43.2	1407	17	3.1	3
45.7	1664	18	3.7	
48.3	1951	19	4.3	4
50.8	2268	20	5.0	
53.3	2618	21	5.8	5
55.9	3002	22	6.6	
58.4	3421	23	7.5	6
61.0	3877	24	8.5	
63.5	4371	25	9.6	7
66.0	4905	26	10.8	
68.6	5481	27	12.1	8
71.1	6100	28	13.4	
73.7	6762	29	14.9	9
76.2	7471	30	16.5	
78.7	8227	31	18.1	10
81.3	9032	32	19.9	11
83.8	9887	33	21.8	12
86.4	10795	34	23.8	13
88.9	11755	35	25.9	14
91.4	12770	36	28.2	15
94.0	13841	37	30.5	
96.5	14970	38	33.0	
99.1	16158	39	35.6	
101.6	17407	40	38.4	

YEAR	POPULATION NUMBER																
	2000	2001	2002	2003	2004	2005	2006	2007	2008	2009	2010	2011	2012	2013	2014	2015	2016
2000	575	373	317	269	228	193	164	139	118	100	85	72	61	21	7	2	0
2001		0	0	0	0	0	0	0	0	0	0	0	0	0	0	0	0
2002			0	0	0	0	0	0	0	0	0	0	0	0	0	0	0
2003				0	0	0	0	0	0	0	0	0	0	0	0	0	0
2004					0	0	0	0	0	0	0	0	0	0	0	0	0
2005						0	0	0	0	0	0	0	0	0	0	0	0
2006							235	152	129	109	92	78	66	56	47	39	33
2007								0	0	0	0	0	0	0	0	0	0
2008									0	0	0	0	0	0	0	0	0
2009										0	0	0	0	0	0	0	0
2010											235	152	129	109	92	78	66
2011												0	0	0	0	0	0
2012													0	0	0	0	0
2013														235	152	129	109
2014															0	0	0
2015																0	0
2016																	235

Removed	0	0	0	0	0	0	0	0	0	0	0	0	0	0	0	0	0
Yr. End Pop.	575	373	317	269	228	193	399	291	247	209	412	302	256	421	298	248	443

YEAR	POPULATION BIOMASS																
	2000	2001	2002	2003	2004	2005	2006	2007	2008	2009	2010	2011	2012	2013	2014	2015	2016
2000	288	373	634	807	912	965	984	973	944	900	850	792	732	273	98	30	0
2001		0	0	0	0	0	0	0	0	0	0	0	0	0	0	0	0
2002			0	0	0	0	0	0	0	0	0	0	0	0	0	0	0
2003				0	0	0	0	0	0	0	0	0	0	0	0	0	0
2004					0	0	0	0	0	0	0	0	0	0	0	0	0
2005						0	0	0	0	0	0	0	0	0	0	0	0
2006							118	152	258	327	368	390	396	392	376	351	297
2007								0	0	0	0	0	0	0	0	0	0
2008									0	0	0	0	0	0	0	0	0
2009										0	0	0	0	0	0	0	0
2010											118	152	258	327	368	390	330
2011												0	0	0	0	0	0
2012													0	0	0	0	0
2013														118	152	258	218
2014															0	0	0
2015																0	0
2016																	118
Total Biomass - Lbs.	287.5	373	634	807	912	965	1101.5	1125	1202	1227	1335.5	1334	1386	1109.5	994	1029	962.5
Standing Crop - Lbs/Acre	5.2	6.7	11.5	14.6	16.5	17.5	19.9	20.3	21.7	22.2	24.2	24.1	25.1	20.1	18.0	18.6	17.4

YEAR	RECRUITMENT	MORTALITY			
		Initial	Mature	Old Age	Average
2000	575		20%	20%	20%
2001	0	Survival	80%	80%	80%
2002	0				
2003	0				
2004	0				
2005	0				
2006	235				
2007	0				
2008	0				
2009	0				
2010	235				
2011	0				
2012	0				
2013	235				
2014	0				
2015	0				
2016	235				

55.3 Lake Surface Area (acres)

YEAR	POPULATION NUMBER																
	2000	2001	2002	2003	2004	2005	2006	2007	2008	2009	2010	2011	2012	2013	2014	2015	2016
2000	575	460	368	294	235	188	150	120	96	76	60	48	38	30	24	19	15
2001		0	0	0	0	0	0	0	0	0	0	0	0	0	0	0	0
2002			0	0	0	0	0	0	0	0	0	0	0	0	0	0	0
2003				0	0	0	0	0	0	0	0	0	0	0	0	0	0
2004					0	0	0	0	0	0	0	0	0	0	0	0	0
2005						0	0	0	0	0	0	0	0	0	0	0	0
2006							235	188	150	120	96	76	60	48	38	30	24
2007								0	0	0	0	0	0	0	0	0	0
2008									0	0	0	0	0	0	0	0	0
2009										0	0	0	0	0	0	0	0
2010											235	188	150	120	96	76	60
2011												0	0	0	0	0	0
2012													0	0	0	0	0
2013														235	188	150	120
2014															0	0	0
2015																0	0
2016																	235

Removed	0	0	0	0	0	0	0	0	0	0	0	0	0	0	0	0	0
Yr. End Pop.	575	460	368	294	235	188	385	308	246	196	391	312	248	433	346	275	454

YEAR	POPULATION BIOMASS																
	2000	2001	2002	2003	2004	2005	2006	2007	2008	2009	2010	2011	2012	2013	2014	2015	2016
2000	288	460	736	882	940	940	900	840	768	684	600	528	456	390	336	285	240
2001		0	0	0	0	0	0	0	0	0	0	0	0	0	0	0	0
2002			0	0	0	0	0	0	0	0	0	0	0	0	0	0	0
2003				0	0	0	0	0	0	0	0	0	0	0	0	0	0
2004					0	0	0	0	0	0	0	0	0	0	0	0	0
2005						0	0	0	0	0	0	0	0	0	0	0	0
2006							118	188	300	360	384	380	360	336	304	270	216
2007								0	0	0	0	0	0	0	0	0	0
2008									0	0	0	0	0	0	0	0	0
2009										0	0	0	0	0	0	0	0
2010											118	188	300	360	384	380	300
2011												0	0	0	0	0	0
2012													0	0	0	0	0
2013														118	188	300	240
2014															0	0	0
2015																0	0
2016																	118
Total Biomass - Lbs.	287.5	460	736	882	940	940	1017.5	1028	1068	1044	1101.5	1096	1116	1203.5	1212	1235	1113.5
Standing Crop - Lbs/Acre	5.2	8.3	13.3	15.9	17.0	17.0	18.4	18.6	19.3	18.9	19.9	19.8	20.2	21.8	21.9	22.3	20.1

YEAR	RECRUITMENT	MORTALITY			
		Initial	Mature	Old Age	Average
2000	575	15%	15%	15%	15%
2001	0	Survival 85%	85%	85%	85%
2002	0				
2003	0				
2004	0				
2005	0				
2006	235				
2007	0				
2008	0				
2009	0				
2010	235				
2011	0				
2012	0				
2013	235				
2014	0				
2015	0				
2016	235				

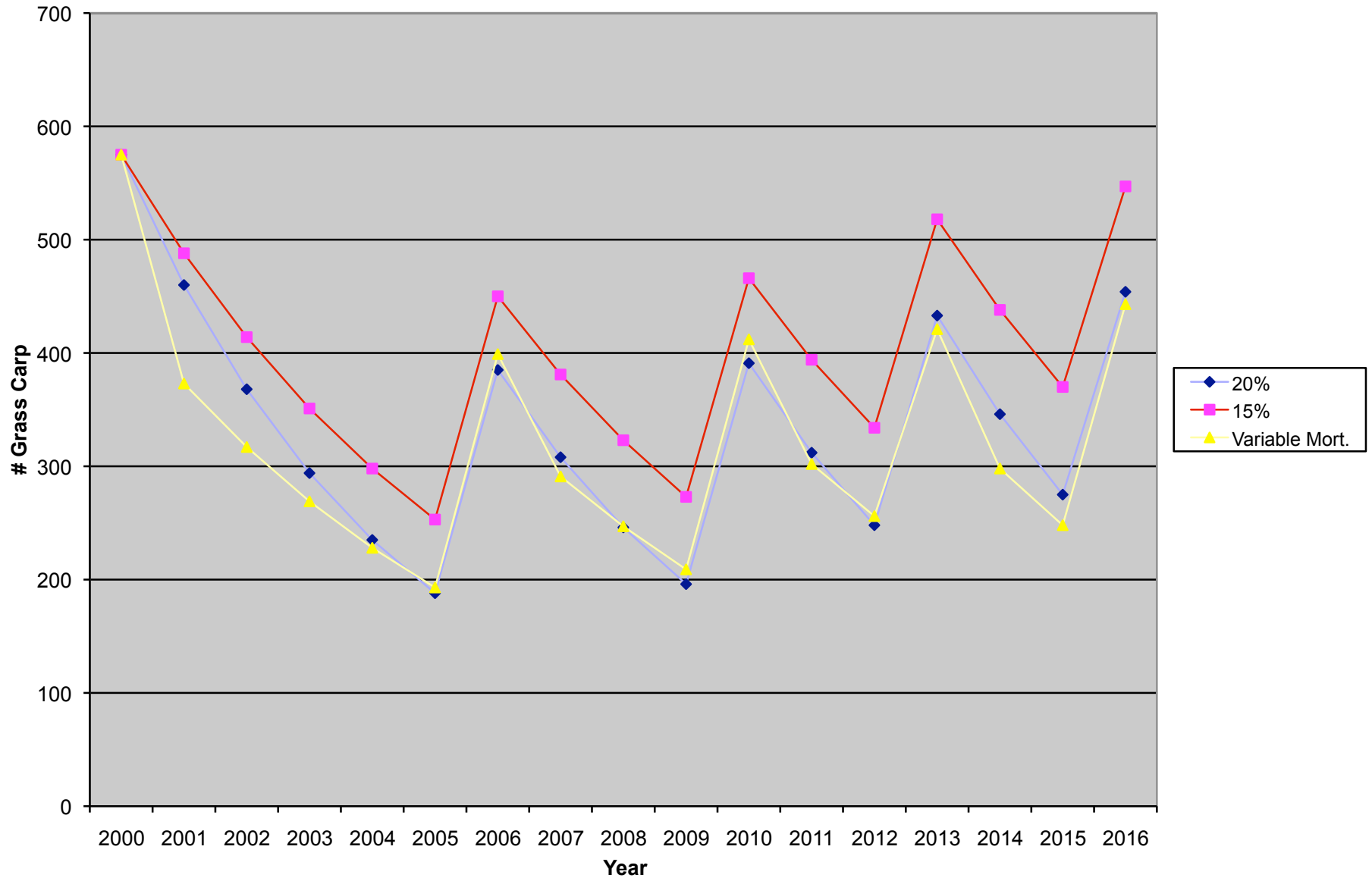
55.3 Lake Surface Area (acres)

YEAR	POPULATION NUMBER																
	2000	2001	2002	2003	2004	2005	2006	2007	2008	2009	2010	2011	2012	2013	2014	2015	2016
2000	575	488	414	351	298	253	215	182	154	130	110	93	79	67	56	47	39
2001		0	0	0	0	0	0	0	0	0	0	0	0	0	0	0	0
2002			0	0	0	0	0	0	0	0	0	0	0	0	0	0	0
2003				0	0	0	0	0	0	0	0	0	0	0	0	0	0
2004					0	0	0	0	0	0	0	0	0	0	0	0	0
2005						0	0	0	0	0	0	0	0	0	0	0	0
2006							235	199	169	143	121	102	86	73	62	52	44
2007								0	0	0	0	0	0	0	0	0	0
2008									0	0	0	0	0	0	0	0	0
2009										0	0	0	0	0	0	0	0
2010											235	199	169	143	121	102	86
2011												0	0	0	0	0	0
2012													0	0	0	0	0
2013														235	199	169	143
2014															0	0	0
2015																0	0
2016																	235

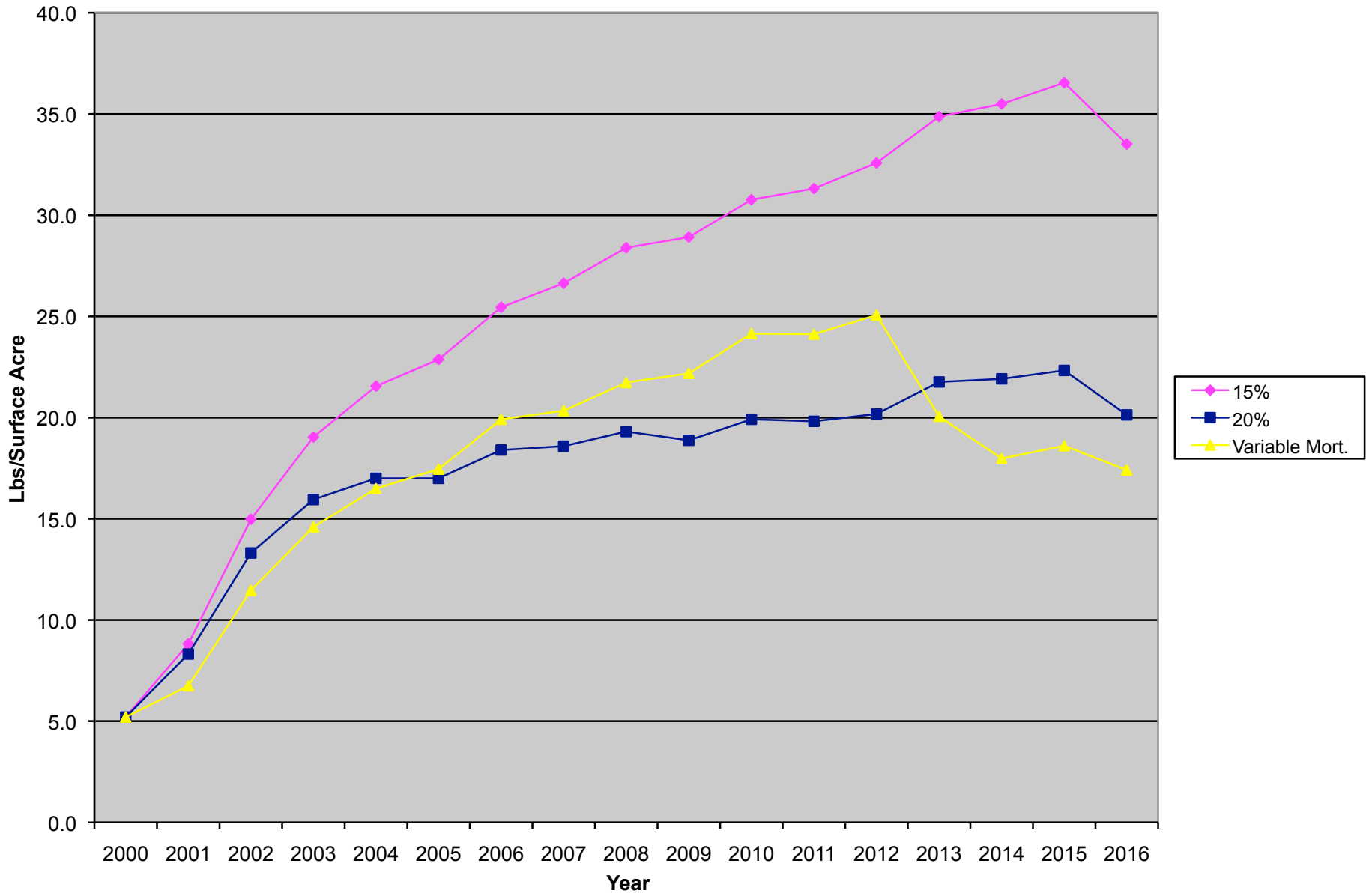
Removed	0	0	0	0	0	0	0	0	0	0	0	0	0	0	0	0	0
Yr. End Pop.	575	488	414	351	298	253	450	381	323	273	466	394	334	518	438	370	547

YEAR	POPULATION BIOMASS																
	2000	2001	2002	2003	2004	2005	2006	2007	2008	2009	2010	2011	2012	2013	2014	2015	2016
2000	288	488	828	1053	1192	1265	1290	1274	1232	1170	1100	1023	948	871	784	705	624
2001		0	0	0	0	0	0	0	0	0	0	0	0	0	0	0	0
2002			0	0	0	0	0	0	0	0	0	0	0	0	0	0	0
2003				0	0	0	0	0	0	0	0	0	0	0	0	0	0
2004					0	0	0	0	0	0	0	0	0	0	0	0	0
2005						0	0	0	0	0	0	0	0	0	0	0	0
2006							118	199	338	429	484	510	516	511	496	468	396
2007								0	0	0	0	0	0	0	0	0	0
2008									0	0	0	0	0	0	0	0	0
2009										0	0	0	0	0	0	0	0
2010											118	199	338	429	484	510	430
2011												0	0	0	0	0	0
2012													0	0	0	0	0
2013														118	199	338	286
2014															0	0	0
2015																0	0
2016																	118
Total Biomass - Lbs.	287.5	488	828	1053	1192	1265	1407.5	1473	1570	1599	1701.5	1732	1802	1928.5	1963	2021	1853.5
Standing Crop - Lbs/Acre	5.2	8.8	15.0	19.0	21.6	22.9	25.5	26.6	28.4	28.9	30.8	31.3	32.6	34.9	35.5	36.5	33.5

Number of Grass Carp - Seven Hills Lake



Gass Carp Standing Crop - Seven Hills Lake



$$W = aL^b$$

$$a = 0.0219$$

$$b = 2.94$$

SL (cm)	W (gr)	SL (in)	W (lb)	Ag (yr)
25.4	296	10	0.7	1
27.9	391	11	0.9	
30.5	505	12	1.1	
33.0	639	13	1.4	
35.6	795	14	1.8	2
38.1	974	15	2.1	
40.6	1177	16	2.6	
43.2	1407	17	3.1	3
45.7	1664	18	3.7	
48.3	1951	19	4.3	4
50.8	2268	20	5.0	
53.3	2618	21	5.8	5
55.9	3002	22	6.6	
58.4	3421	23	7.5	6
61.0	3877	24	8.5	
63.5	4371	25	9.6	7
66.0	4905	26	10.8	
68.6	5481	27	12.1	8
71.1	6100	28	13.4	
73.7	6762	29	14.9	9
76.2	7471	30	16.5	
78.7	8227	31	18.1	10
81.3	9032	32	19.9	11
83.8	9887	33	21.8	12
86.4	10795	34	23.8	13
88.9	11755	35	25.9	14
91.4	12770	36	28.2	15
94.0	13841	37	30.5	
96.5	14970	38	33.0	
99.1	16158	39	35.6	
101.6	17407	40	38.4	